

TROMBONE

# MOTOWN MEDLEY

SUGAR PIE

3

First staff of music for 'Sugar Pie', measures 1-3. It begins with a 4/4 time signature and a 3-measure rest.

8

Second staff of music for 'Sugar Pie', measures 4-8. It starts with an 8-measure rest followed by a melodic line.

Third staff of music for 'Sugar Pie', measures 9-13. It continues the melodic line with various articulations.

Fourth staff of music for 'Sugar Pie', measures 14-18. It features a complex melodic passage with slurs and accents.

Fifth staff of music for 'Sugar Pie', measures 19-23. It continues the melodic line with slurs and accents.

TEARS OF A CLOWN

First staff of music for 'Tears of a Clown', measures 1-4. It begins with a key signature change to two flats and a melodic line.

Second staff of music for 'Tears of a Clown', measures 5-8. It continues the melodic line with slurs.

Third staff of music for 'Tears of a Clown', measures 9-12. It includes first and second endings for a repeat.

Fourth staff of music for 'Tears of a Clown', measures 13-16. It features a melodic line with slurs and accents.

Fifth staff of music for 'Tears of a Clown', measures 17-20. It continues the melodic line with slurs and accents.



TROMBONE

KEEP ME HANGIN ON

Musical notation for the first system of 'KEEP ME HANGIN ON'. The staff contains eighth and quarter notes with various accidentals (flats and naturals) and some rests.

Musical notation for the second system of 'KEEP ME HANGIN ON'. It includes a 'CH' (chord) marking above a measure. The notation continues with eighth and quarter notes.

NOWHERE TO RUN

Musical notation for the third system of 'NOWHERE TO RUN'. It features a double bar line and a measure with a '2' above it, indicating a two-measure rest.

Musical notation for the fourth system of 'NOWHERE TO RUN'. It includes first and second endings (marked 1. and 2.) and measures with '8' and '4' above them, indicating rests of 8 and 4 measures.

Musical notation for the fifth system of 'NOWHERE TO RUN'. It includes first and second endings (marked 1. and 2.) and measures with '8' and '4' above them, indicating rests of 8 and 4 measures.

GET READY

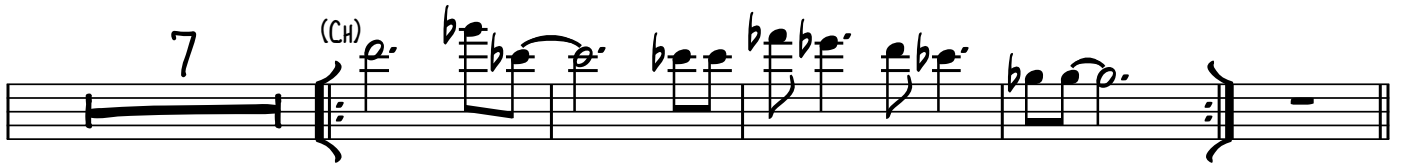
Musical notation for the sixth system of 'GET READY'. It features eighth notes and rests with '8' and '4' above them, indicating rests of 8 and 4 measures.

Musical notation for the seventh system of 'GET READY'. It features eighth notes and rests.

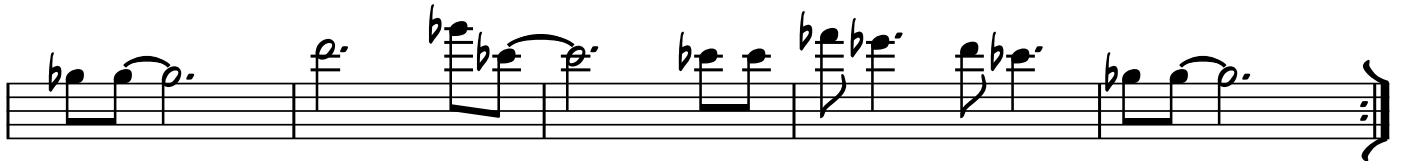
REACH OUT

Musical notation for the eighth system of 'REACH OUT'. It includes eighth notes, a triplet of eighth notes, and a measure with '8' above it, indicating a rest of 8 measures.

TROMBONE

7 (CH) 

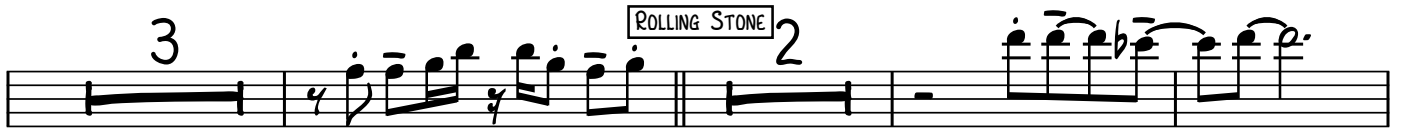
8 7 (CH) 



I WAS MADE TO LOVE YOU





3  ROLLING STONE 2

2  16

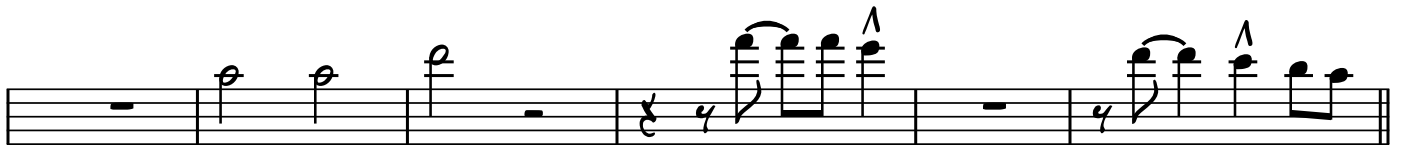
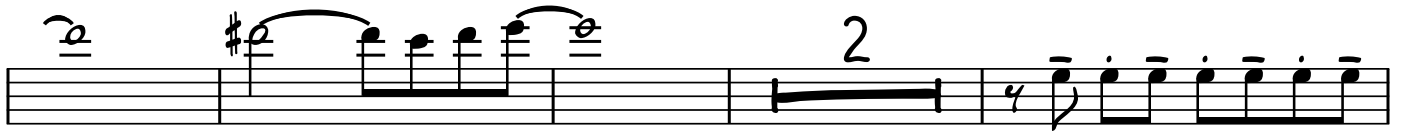
(CH)

24  BUTTERCUP 8



 7

TROMBONE



DANCE TO THE MUSIC



I WISH



TROMBONE

4

(CH)

*fff*

6

(3X REPEAT)