

Ex's And Oh's

Swing

Rhythm

♩=180

INTRO

arr. Tilden Webb

Em⁶



5 **A** Em⁶

C⁷



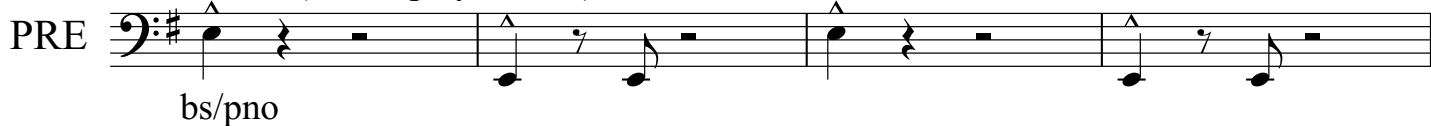
9 B^{7b9}

Em⁶

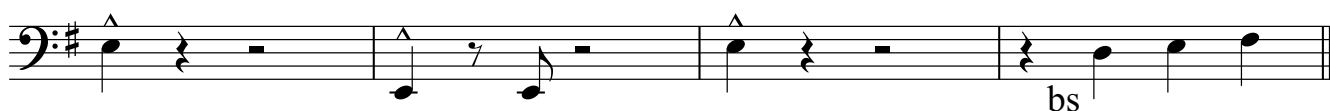
2x



13 **B** Em⁶ (drums play toms...)



17



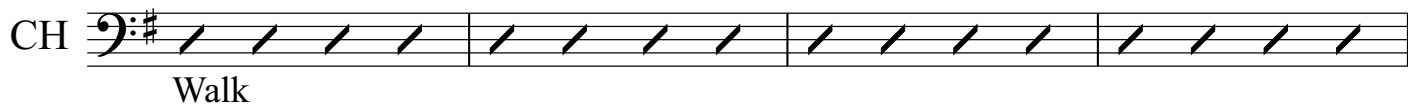
21 **C** G⁶

F#m^{7b5} B^{7b9}

Em⁷

A⁷

D⁷

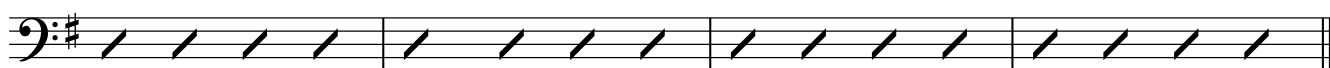


25 G⁶

Db^{7#11}

C_MA⁷

B^{7b9}



29 Em⁶



33 **D** Em⁶ C⁷

V

37 B^{7b9} Em⁶ 2x

41 Em⁶ (drums play toms...)

PRE

bs/pno

45

bs

49 **E** G⁶ F#m^{7b5} B^{7b9} Em⁷ A⁷ D⁷

CH

Walk

53 G⁶ Db^{7#11} C^{MA7} G/B Am⁷ D⁷

57 G⁶ F#m^{7b5} B^{7b9} Em⁷ A⁷ D⁷

61 G⁶ Db^{7#11} C^{MA7} B^{7b9}

SOLOS

65 Em⁶ F#m^{7b5} B^{7b9} Em⁶ C⁷

69 B^{7b9} Em⁶ F#m^{7b5} B^{7b9} 8x

4x 1st Solo, 4x 2nd Solo

73 Em⁶ (drums play toms...)

PRE

77

81 G⁶ F#m^{7b5} B^{7b9} Em⁷ A⁷ D⁷

CH

Walk

85 G⁶ Db^{7#11} C^{MA7} G/B Am⁷ D⁷

89 G⁶ F#m^{7b5} B^{7b9} Em⁷ A⁷ D⁷

93 G⁶ Db^{7#11} C^{MA7} B^{7b9}

97 Em⁶

FINE