

Swing  
♩=132

# Should I Stay Or Should I Go?

Sugar Pie & The Candymen

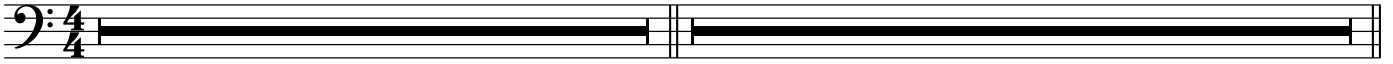
Trombone

Intro

6

A (V)

12



B

19 *sfz* ————— *f* *sfz* ————— *f*

23 *sfz* ————— *f* *sfz* ————— *f*

27 *sfz* ————— *f* *ff*

Musical notation for section B, measures 19-30. It consists of three staves in bass clef. The first staff (measures 19-22) has a key signature of one flat and a 7/8 time signature. The second staff (measures 23-26) has a key signature of one flat and a 7/8 time signature. The third staff (measures 27-30) has a key signature of one flat and a 7/8 time signature. Dynamics include sfz, f, and ff. There are accents (^) and slurs. Measure 27 contains triplets of eighth notes.

Double time  
C ♩=264

31 *f*

35

39

43

47 *ff* V.S. - quick

♩=132  
Original Tempo

Musical notation for section C, measures 31-47. It consists of five staves in bass clef. The first staff (measures 31-34) has a key signature of one flat and a 7/8 time signature. The second staff (measures 35-38) has a key signature of one flat and a 7/8 time signature. The third staff (measures 39-42) has a key signature of one flat and a 7/8 time signature. The fourth staff (measures 43-46) has a key signature of one flat and a 7/8 time signature. The fifth staff (measures 47-50) has a key signature of one flat and a 7/8 time signature. Dynamics include f and ff. There are accents (^) and slurs. Measure 47 contains a triplet of eighth notes. A tempo change to 132 bpm is indicated above the fifth staff, and a 'V.S. - quick' instruction is at the end.

Should I Stay Or Should I Go? - Trombone

**D**

51 V *mf*

55

59 *f* 3

Double time

**E** ♩=264

63 CH *f*

67

71

75

79 2x

83 *ff sfz*

V.S.

**SOLOS**

2x Tenor Solo, 2x Piano Solo

87 **F** (Still Double x)

**24**

**4x**



111 **G**  
OUT

