

Ballad
 Straight 16ths
 brushes

Black Hole Sun

Tenor Sax

arr. Tilden Webb

♩=56

INTRO GMA⁷ B^bMA^{7#11} FMA⁷ Em¹¹ E^bMA⁷ D^{7sus}

4 **A** GMA⁷ B^bMA^{7#11} FMA⁹ Em¹¹ E^bMA⁷ D^{7sus} GMA⁷ FMA⁷ A^bMA^{7#11}
 (out)

8 GMA⁷ B^bMA^{7#11} FMA⁹ Em¹¹ E^bMA⁷ D^{7sus}

11 GMA⁷ FMA⁷ A^bMA^{7#11} **B** E^bMA⁷ D^{7sus} GMA⁷ FMA⁷ A
 3

15 E^bMA⁷ D^{7sus} 1. C^{7sus} D^{7sus} 2. CMA⁷ B^bMA⁷
 3

19 E^bMA⁷ D^{7sus} GMA⁷ FMA⁷ A B^bMA^{7#11} E^bMA⁷ D^{7sus}

22 CMA⁷ B^bMA⁷ D^{7sus} 4x
 fills

SOLOS

24 **C** GMA⁷ B^bMA^{7#11} FMA⁹ Em¹¹ E^bMA⁷ D⁷sus GMA⁷ FMA⁷ A^bMA^{7#11}



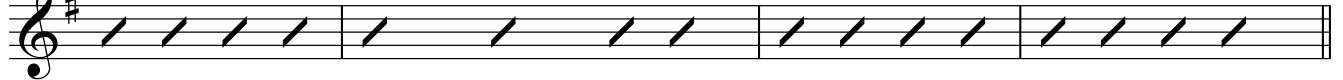
28 GMA⁷ B^bMA^{7#11} FMA⁹ Em¹¹ E^bMA⁷ D⁷sus GMA⁷ FMA⁷ A^bMA^{7#11}



32 **D** E^bMA⁷ D⁷sus GMA⁷ $\frac{FMA^7}{A}$ B^bMA^{7#11} E^bMA⁷ D⁷sus CMA⁷ B^bMA⁷



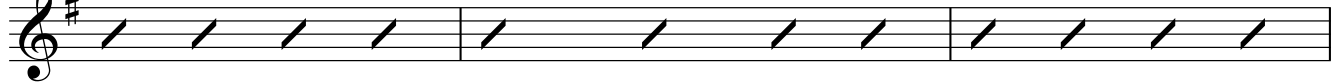
36 E^bMA⁷ D⁷sus GMA⁷ $\frac{FMA^7}{A}$ B^bMA^{7#11} E^bMA⁷ D⁷sus CMA⁷ B^bMA⁷ **END SOLOS**



40 **E** E^bMA⁷ D⁷sus GMA⁷ $\frac{FMA^7}{A}$ B^bMA^{7#11} E^bMA⁷ D⁷sus CMA⁷ B^bMA⁷



44 E^bMA⁷ D⁷sus GMA⁷ $\frac{FMA^7}{A}$ B^bMA^{7#11} E^bMA⁷ D⁷sus



47 **F** CMA⁷ B^bMA⁷ D⁷sus **Open** N.C. FMA^{7#11}

