

BASS

GARY ANTHONY

6

COME FLY WITH ME

ARRANGED BY GENE WHITE

MED'M SWING (♩ = ♩³)

(WALK IN 4)

Chords and dynamics for measures 1-32:

- 1: F⁷/C
- 2: F⁷
- 3: G^{b7}
- 4: F⁹
- 5: A (VOCAL IN) (mf)
- 6: B^b
- 7: B^b/D
- 8: D^bdim
- 9: C^m
- 10: F⁷ G^{b7} F⁷
- 11: B^b
- 12: C^{m7}
- 13: D^{m7}
- 14: G⁷(b9)
- 15: C^{m7}
- 16: A^{b9}
- 17: B^b
- 18: E^{b9}
- 19: D⁷
- 20: G⁷
- 21: C¹³
- 22: F¹³
- 23: B (mf)
- 24: B^b
- 25: B^{b7}+5
- 26: E^b
- 27: E^b G^{b9} F⁷
- 28: B^bmaj⁹ B^{b6}
- 29: D^{m9} G⁷(b9)
- 30: E^bmaj⁹ E^{b6} E^bmaj⁷ A^{b9}(+11) A^{b13}
- 31: B^{b6}
- 32: E^{b9} F⁷
- 33: B^b D^{b7} C⁷ B^{b7} B^bmaj⁷ B^{b6}
- 34: C (mf)
- 35: G^{b6}
- 36: G^b+
- 37: C^{b6}(B^b6)
- 38: D^{b9}

"COME FLY WITH ME"

BASS

G_b+5 G_b. **D** G_b G_b+5 G_b⁶

Fmaj⁷ Am⁷ D⁷(b9) G_m⁷(II) C⁷ G_m⁷ C⁷

Ped F **E** B_b Dbdim

C_m⁷ C_m⁷ F⁹ B_bmaj⁷ B_b⁶ D_m¹¹ G⁷

C_m⁹(II) E_bm⁹ A_b⁷ **F** B_b⁶ B_bmaj⁷ E_bm⁷ A_b⁹

B_b⁶ C_m⁷ D_m⁷(b5) G⁷ G⁷(b9) C_m⁷ F¹³

B_b C_m⁷ F⁷ **G** B_b. B_b⁹+5

E_b⁶ F⁷ B_b E_b⁹ F⁷

C_m⁷ A_b⁹ B_b E_b⁹ F⁷

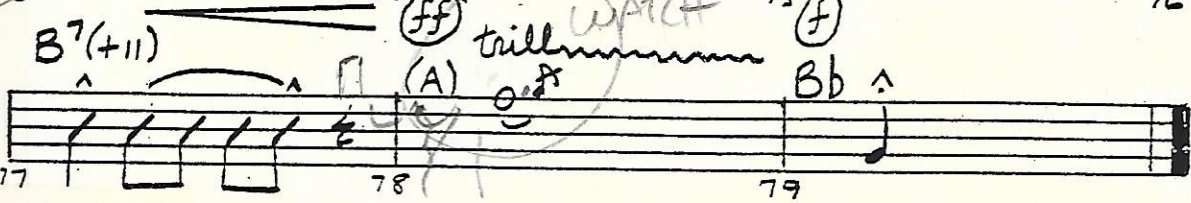
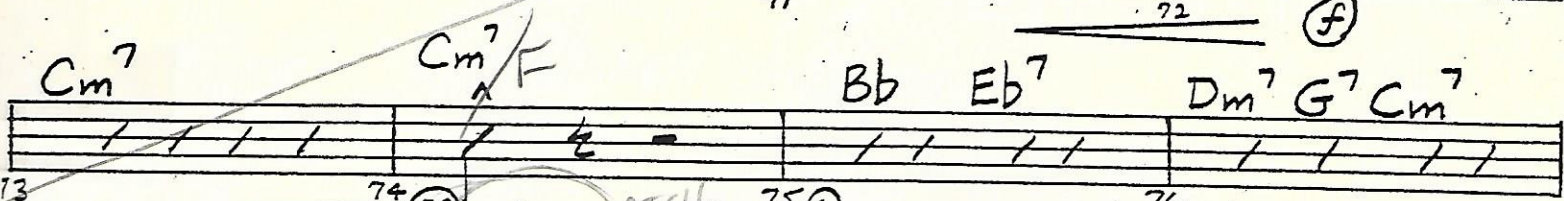
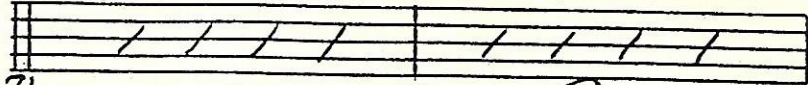
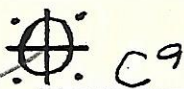
B_b C_m⁷ C[#] B_b **D** (VOCAL PICKUP)

D.S. **S.** al CODA **S.**

"COME FLY WITH ME"

BASS

CODA



CO