

BASS

THE GIRL FROM IPANEMA

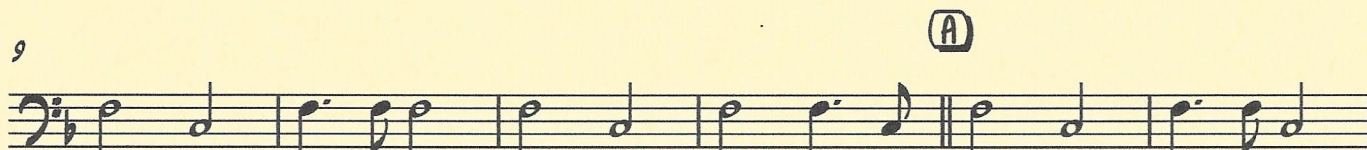
As sung by FRANK SINATRA with CARLOS JOBIM

♩ = 135 BOSSA

3
1-3



9 (A)



15 mf




21



27 (B)



33



39



45 (C)



BASS

D

51



57



63



69 **E**



75



81

F



87

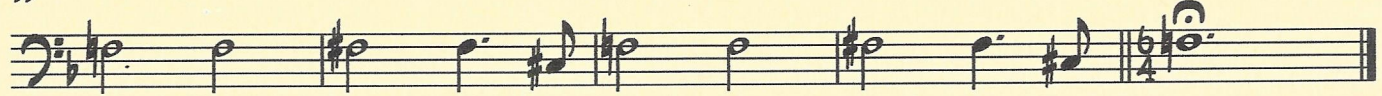


mf dim.

93



99



Rall.

mp