

TROMBONE

(CONCERT KEY = F) **I'M COMING OUT MEDLEY**

(INTRO) 2

mp

(HORN SOLI)

mf

mf

(CH) 3

mp

(V) 8 (PC)

mp

(CH)

f mp < f

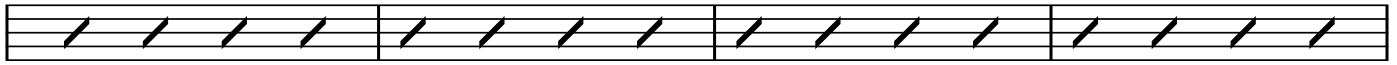
mp < f mp <

f mp <

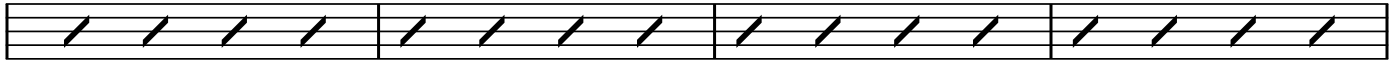
TROMBONE

(TROMBONE SOLO)

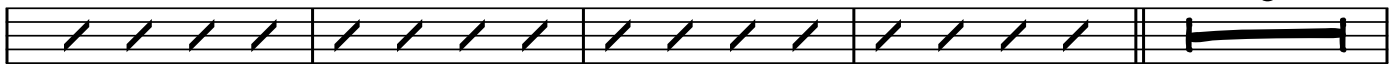
F⁶ Am⁷ Gm⁷ Am⁷ Gm⁷ Am⁷ Gm⁷ Am⁷



F⁶ Am⁷ Gm⁷ Am⁷ Gm⁷ Am⁷ Gm⁷ Am⁷



Dm Bb F/A 8



(RAP) 3 *p* 3 *p*
mp *mp*

(CH) 7 *p*
mp

(CH) *f* *mp*

f *mp*

3 *p* 3 *p*