

TENOR SAXOPHONE

CAN'T TAKE MY EYES OFF YOU

(CONCERT KEY = F)

FRANKIE VALLI & 4 SEASONS

(HORN INTRO)

Musical notation for the Horn Intro, first system. It begins with a treble clef, a 4/4 time signature, and a dynamic marking of *mf*. The melody starts with a whole rest, followed by a half note G4, and then a series of eighth notes: A4, B4, C5, B4, A4, G4, F4, E4, D4, C4. The system ends with two whole rests.

Musical notation for the Horn Intro, second system. It continues the melody from the first system. A first ending bracket labeled (v) and 14 spans the final two measures. The melody then repeats from the beginning of the first system.

Musical notation for the Horn Intro, third system. It begins with a first ending bracket labeled (v) and 12, followed by a whole rest. The melody then repeats from the beginning of the first system.

Musical notation for the Horn Intro, fourth system. It starts with a dynamic marking of *f* and a (CH) marking. The melody consists of eighth notes with accents: G4, A4, B4, C5, B4, A4, G4, F4, E4, D4, C4. The system ends with a trill on G4.

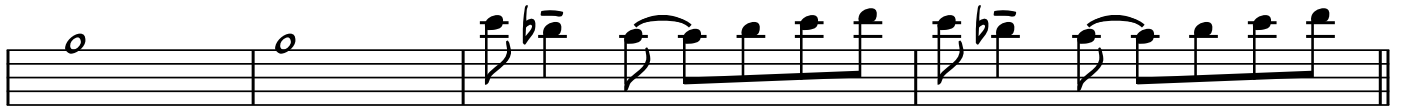
Musical notation for the Horn Intro, fifth system. It continues the eighth-note melody with accents, starting with a dynamic marking of *f*.

Musical notation for the Horn Intro, sixth system. It continues the eighth-note melody with accents, ending with a dynamic marking of *sfz* and a hairpin.

Musical notation for the Horn Intro, seventh system. It continues the eighth-note melody with accents.

Musical notation for the Horn Intro, eighth system. It begins with a whole note G4, followed by a first ending bracket labeled (v) and 12, and ends with a hairpin.

TENOR SAXOPHONE



(OPEN REPEAT)

