

SUPERSTITION

- STEVIE WUNDER

OPEN INTRO

VERSE

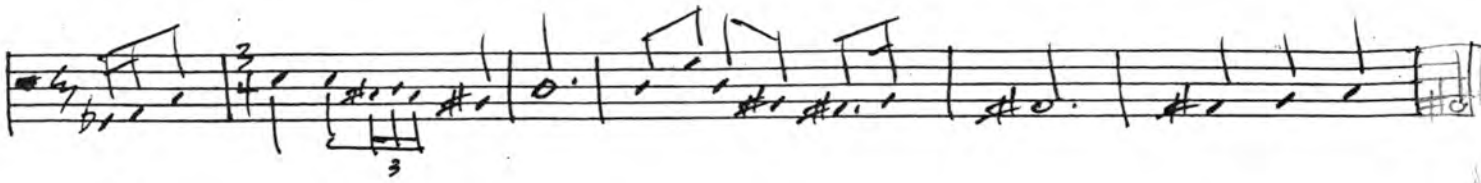
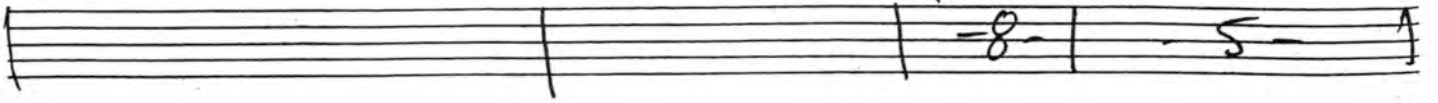
— 8 —

Handwritten musical notation for the first system of the song. It consists of four staves. The first staff begins with a bracket labeled "4x's" above a series of notes. The second staff contains a sequence of notes with a bracket labeled "CHORUS" above it. The third staff continues the melodic line. The fourth staff ends with the text "OPEN YAMP" written below the staff.

Handwritten musical notation for the second system of the song. It consists of four staves. The first staff begins with a bracket labeled "VERSE" above a rest of 8 measures, followed by a sequence of notes with a bracket labeled "4x's" above it. The second staff contains a sequence of notes with a bracket labeled "CHORUS" above it. The third staff continues the melodic line. The fourth staff ends with the text "etc..." written below the staff.

"SUPERSTITION"

"LIVIN' ON THE CITY" 2nd VERSE
↓ PRESS 5



"FLASHLIGHT"

