

SUPERSTITION - STEVIE WONDER

OPEN INTRO

VERSE - 8 -

Handwritten musical notation for the first system of the song. It consists of four staves. The first staff begins with a bracket labeled "4x's" above a series of eighth notes. The second staff contains a series of quarter notes with a bracket labeled "CHORUS" above them. The third and fourth staves continue the melodic line with various note values and rests. The key signature is one sharp (F#).

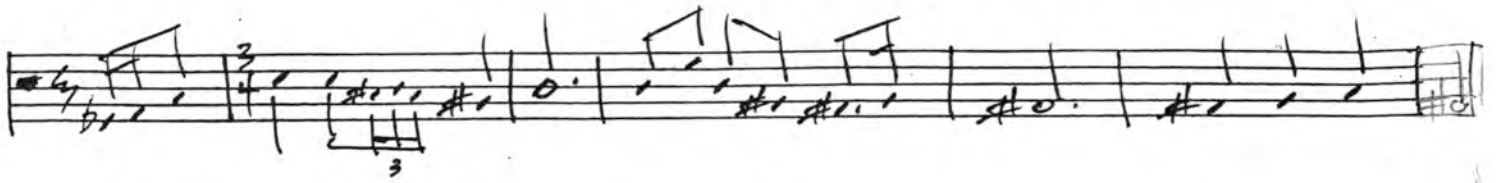
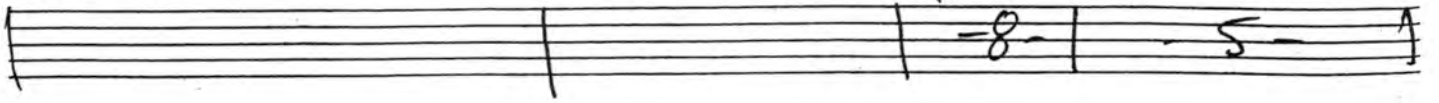
Handwritten musical notation for the second system of the song. It consists of four staves. The first staff begins with a bracket labeled "VERSE" above a rest of 8 measures, followed by a series of eighth notes with a bracket labeled "4x's" above them. The second staff contains a series of quarter notes with a bracket labeled "CHORUS" above them. The third and fourth staves continue the melodic line with various note values and rests. The key signature is one sharp (F#).

etc...

"SUPERSTITION"

"LIVIN FOR THE CITY" 2nd VERSE

↓ PRESS 5



"FLASHLIGHT"

