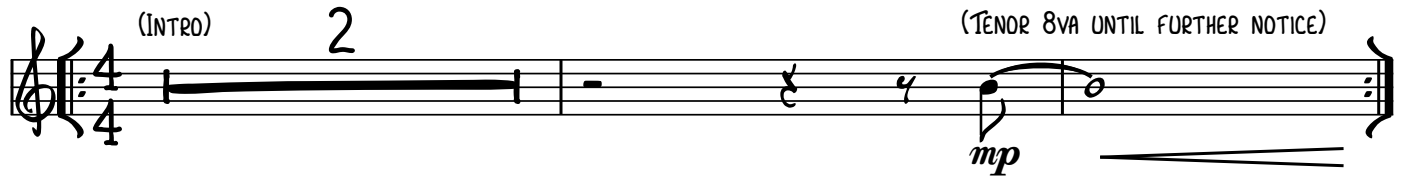


(CONCERT KEY = F)

I'M COMING OUT MEDLEY

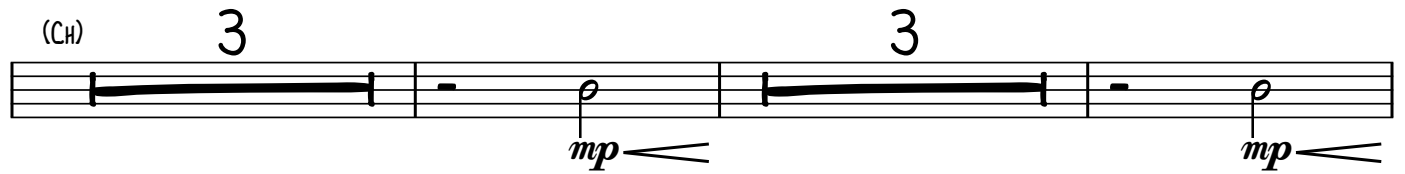
(INTRO) 2 (TENOR 8VA UNTIL FURTHER NOTICE)



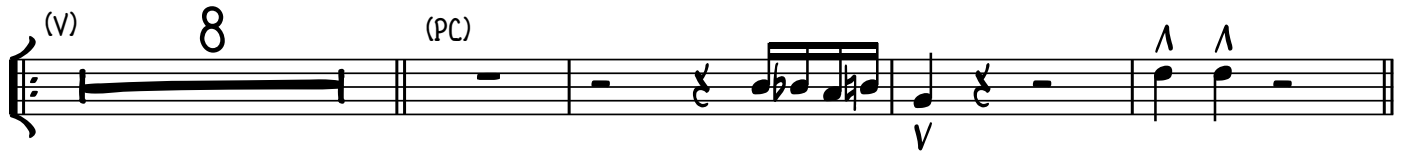
(HORN SOLI) *mf*



(CH) 3 3 *mp*



(V) 8 (PC) *f*



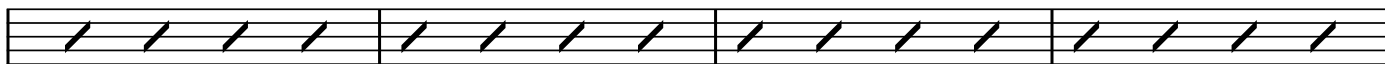
(TENOR LOCO) (CH) (TRUMPET) *f* *mp* *f* *mp*



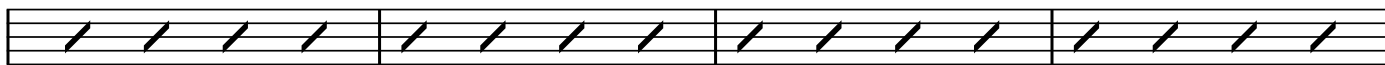
2

(TÉNOR SOLO)

G⁶ B^{m7} A^{m7} B^{m7} A^{m7} B^{m7} A^{m7} B^{m7}



G⁶ B^{m7} A^{m7} B^{m7} A^{m7} B^{m7} A^{m7} B^{m7}



E_m

8

(RAP) 3 d 3 d

mp

(CH) 7 d

mp

(CH) (TÉNOR) (TRUMPET) f d

mp

f d

mp

3 d 3 d

mp