

# DANCE THE NIGHT

(CONCERT KEY = BMIN)

DUA LIPA

(INTRO)

(TÉNOR 8VA)

*mf*

(V)  $\text{>}$  7

(TÉNOR LOCO)

(V)

(TRUMPET)

(CH) (TÉNOR 8VA)

*f*

(V)  $\text{>}$

(TÉN LOCO)

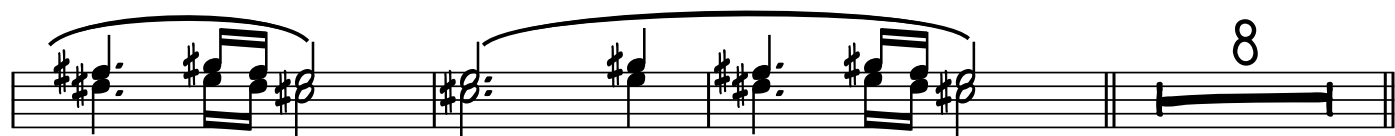
3

(TRUMPET)

(TENOR 8VA)



(TEN LOCO)



(TENOR 8VA)



(TEN LOCO)

