

Shake It Off

Half-time
Gospel feel

♩=138

Rhythm

arr. Tilden Webb

INTRO

G Tenor solo

C/G

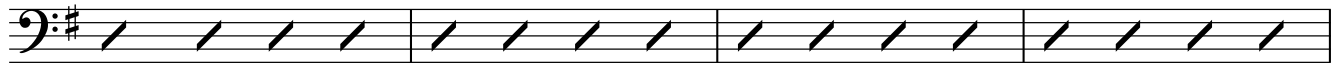
G

C/G

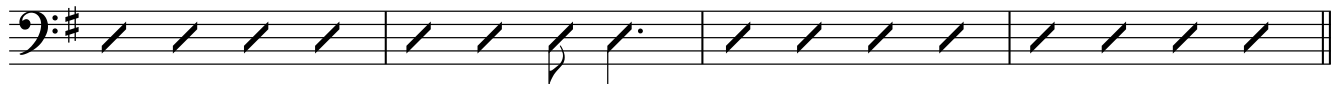
37 G⁷ B⁷/F[#] Em⁷ B^{b7}



41 Am⁷ C⁷



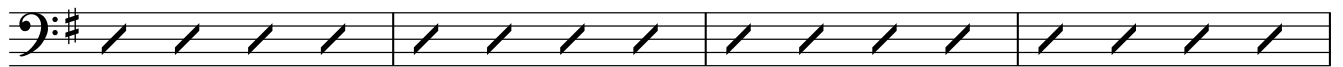
45 G⁷ B⁷/F[#] Em⁷ B^{b7}



49 **D** Am G/B C



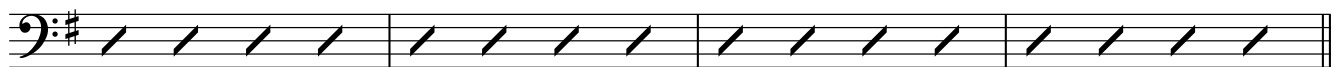
53 G



57 Am F^{7#11}



61 Em⁷ Eb⁷ Dm⁷ G⁷



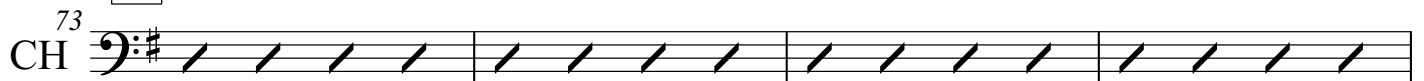
65 **E** C^{MA7} G/B Am⁷ B^{7b9}



69 Em⁷ A⁷ D^{7sus} G B^{b7}



73 **F** Am⁷ C⁷



77 G⁷ B⁷/F[#] Em⁷ B^b7

81 Am⁷ C⁷

85 G⁷ B⁷/F[#] Em⁷ B^b7

SOLOS

89 **G** Am G/B C

93 G

97 Am F⁷#11


101 Em⁷ E^b7 Dm⁷ G⁷

105 C^MA⁷ G/B Am⁷ B⁷b9

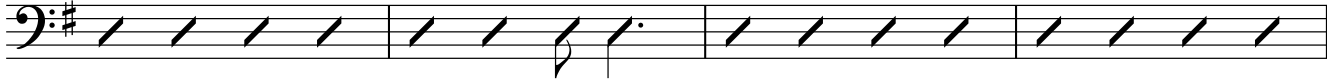
109 Em⁷ A⁷ D⁷sus G B^b7

END SOLOS

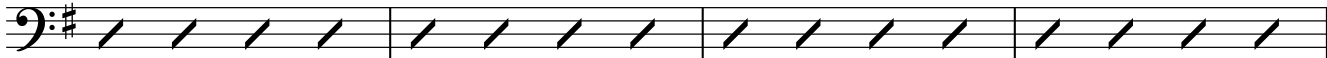
113 **H** Am⁷ C⁷

CH 

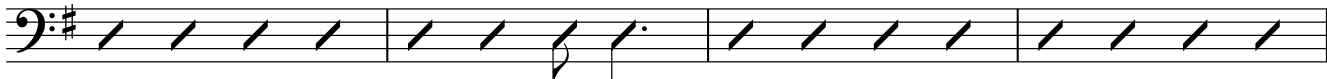
117 G⁷ B⁷/F[#] Em⁷ B^b7



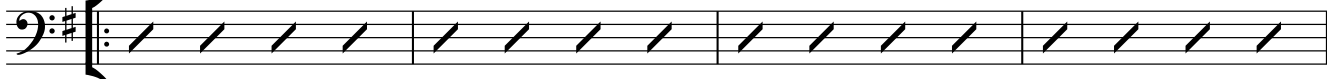
121 Am⁷ C⁷




125 G⁷ B⁷/F[#] Em⁷ B^b7



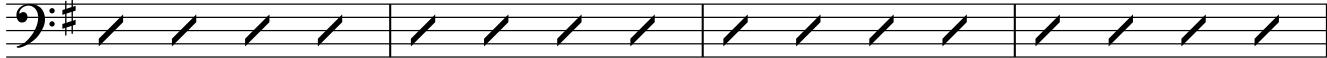
129 **I** Am⁷ C⁷

CH 

133 G⁷ B⁷/F[#] Em⁷ ^{1, 2.} B^b7 ^{3.} D⁷_{sus}

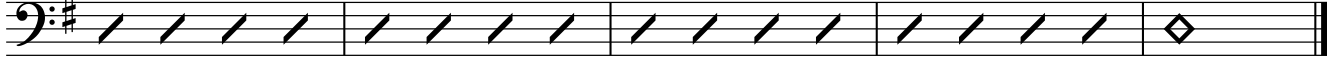


138 **J** G C/G G C/G



(as intro)

142 G C/G G C/G G



FINE