

Ballad
Straight 16ths
brushes

Black Hole Sun

Rhythm

♩=56

arr. Tilden Webb

INTRO FMA⁷ AbMA^{7#11} EbMA⁷ Dm¹¹ DbMA⁷ C^{7sus}

4 **A** FMA⁷ AbMA^{7#11} EbMA⁹ Dm¹¹ DbMA⁷ C^{7sus} FMA⁷ EbMA⁷ GbMA^{7#11}

8 FMA⁷ AbMA^{7#11} EbMA⁹ Dm¹¹ DbMA⁷ C^{7sus}

11 FMA⁷ EbMA⁷ GbMA^{7#11} **B** DbMA⁷ C^{7sus} FMA⁷ $\frac{EbMA^7}{G}$ AbMA^{7#11}

15 DbMA⁷ C^{7sus} 1. Bb^{7sus} C^{7sus} 2. BbMA⁷ AbMA⁷

19 DbMA⁷ C^{7sus} FMA⁷ $\frac{EbMA^7}{G}$ AbMA^{7#11} DbMA⁷ C^{7sus}

22 BbMA⁷ AbMA⁷ C^{7sus} **4x**

fills

SOLOS

24 **C** FMA⁷ AbMA^{7#11} EbMA⁹ Dm¹¹ DbMA⁷ C^{7sus} FMA⁷ EbMA⁷ GbMA^{7#11}



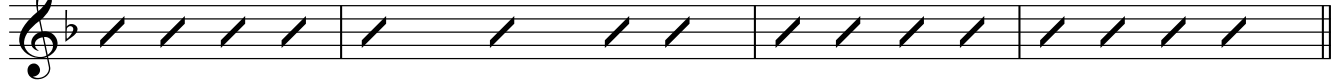
28 FMA⁷ AbMA^{7#11} EbMA⁹ Dm¹¹ DbMA⁷ C^{7sus} FMA⁷ EbMA⁷ GbMA^{7#11}



32 **D** DbMA⁷ C^{7sus} FMA⁷ $\frac{EbMA^7}{G}$ AbMA^{7#11} DbMA⁷ C^{7sus} BbMA⁷ AbMA⁷



36 DbMA⁷ C^{7sus} FMA⁷ $\frac{EbMA^7}{G}$ AbMA^{7#11} DbMA⁷ C^{7sus} BbMA⁷ AbMA⁷ **END SOLOS**

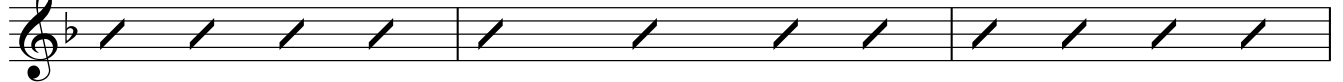


40 **E** DbMA⁷ C^{7sus} FMA⁷ $\frac{EbMA^7}{G}$ AbMA^{7#11} DbMA⁷ C^{7sus} BbMA⁷ AbMA⁷

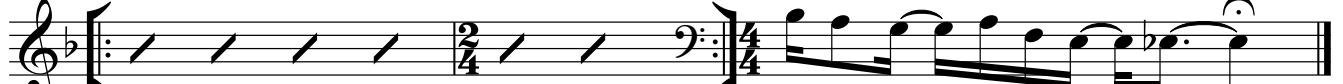


vox back

44 DbMA⁷ C^{7sus} FMA⁷ $\frac{EbMA^7}{G}$ AbMA^{7#11} DbMA⁷ C^{7sus}



47 **F** BbMA⁷ AbMA⁷ C^{7sus} **Open** N.C. EbMA^{7#11}



FINE