

♩=268
Swing
2 beat

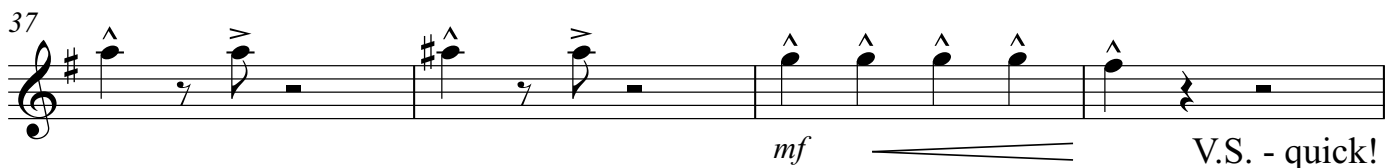
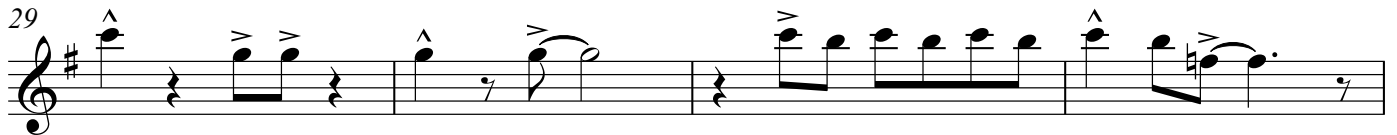
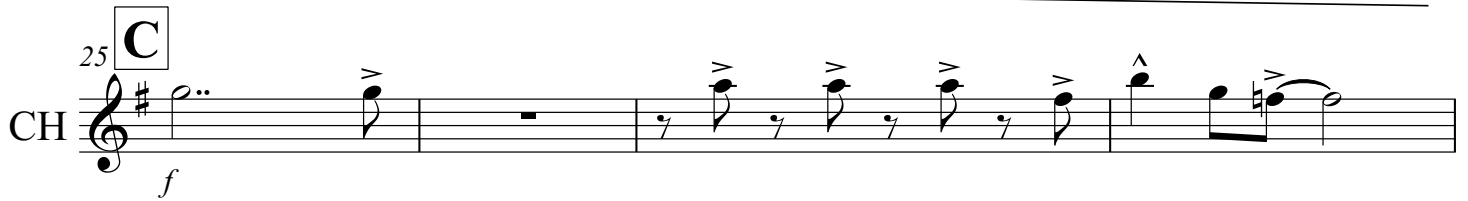
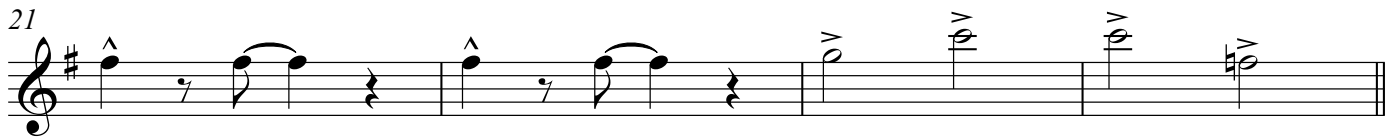
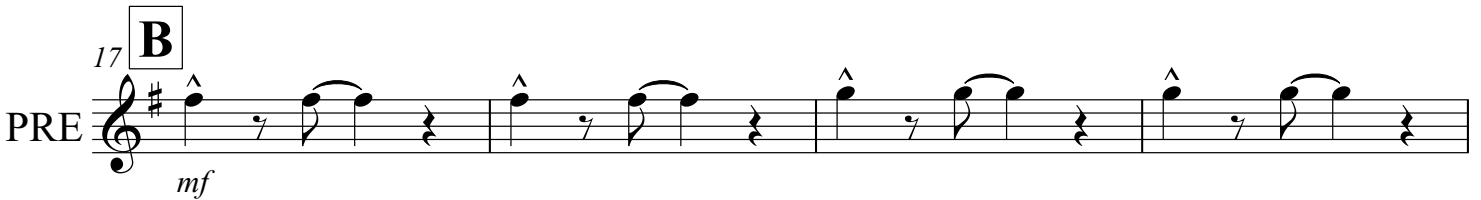
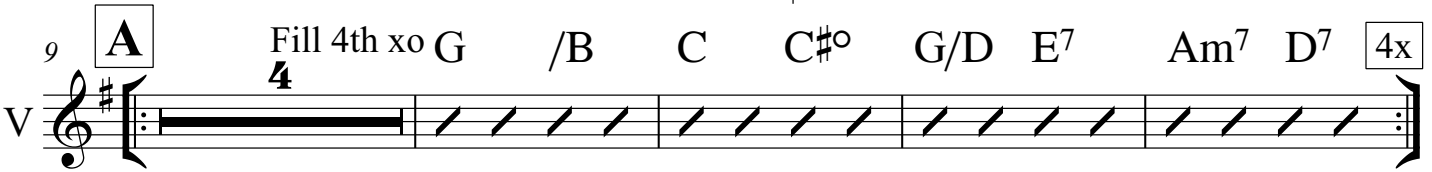
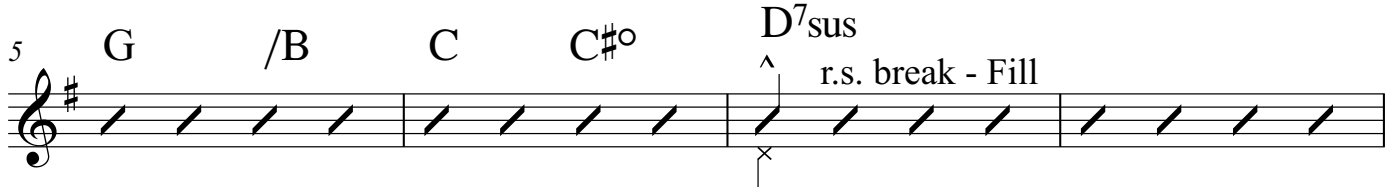
Stacy's Mom

Postmodern Jukebox

Tenor Sax

SOLO

G /B C C#° G/D E7 Am7 D7



41 **D** INT *mf* 1.

45 2. **E** V 7

55 Fill 3rd x 4 G /B C C#° G/D E7 Am7 D7 3x

63 **F** PRE *mf*

67

71 **G** CH *f*

75

79

83 *mf*

87 **H** INT *p* 2x

V.S. - 16 bars rest

91 **I** **16** **J** CH *f*

111

115

119 *F7sus* Start Solo

SOLOS

Solo 1st & 2nd x's

123 **K** Eb Bb F7 Gm Bb7/F

127 Eb Bb F7 Gm Bb7/F

131 Eb Bb D7/F# Gm Bb7/F

135 Eb Eo7 F7sus F7 **4x**

V.S. after solo

Stacy's Mom - Tenor

139 **L**
CH *f*

143

147

151

155 *mf*
OUT

159

FINE