

TRUMPET IN B \flat

EIGHTIES MEDLEY 2022

"RELAX" - FRANKIE GOES TO HOLLYWOOD

(RUBATO INTRO) 4 (Time) 8 (CH)

mf

The first staff of music for 'RELAX' begins with a treble clef and a 4/4 time signature. It features a rubato introduction with a 4-measure rest, followed by an 8-measure rest. The melody then begins with a half note G4, a half note A4, and a half note B4. The dynamic marking *mf* is placed below the first measure.

The second staff continues the melody with a half note C5, a half note D5, and a half note E5. It then features a 4-measure rest, followed by a 4-measure eighth-note pattern: G4, A4, B4, C5. This is followed by a 4-measure rest and another 4-measure eighth-note pattern: G4, A4, B4, C5.

The third staff continues with a 4-measure eighth-note pattern: G4, A4, B4, C5. It then has a 4-measure rest, followed by a 4-measure half-note pattern: G4, A4, B4, C5. This is followed by a 4-measure rest and a 4-measure half-note pattern: G4, A4, B4, C5.

The fourth staff continues with a 4-measure half-note pattern: G4, A4, B4, C5. It then has a 4-measure rest, followed by a 4-measure eighth-note pattern: G4, A4, B4, C5. This is followed by a 4-measure rest and another 4-measure eighth-note pattern: G4, A4, B4, C5.

"YOUR LOVE" - THE OUTFIELD

(V) 8

The first staff of music for 'YOUR LOVE' begins with a 4-measure eighth-note pattern: G4, A4, B4, C5. It then has a 4-measure rest, followed by a 4-measure eighth-note pattern: G4, A4, B4, C5. This is followed by a 4-measure rest and a 4-measure eighth-note pattern: G4, A4, B4, C5. The dynamic marking *mf* is placed below the first measure.

"MATERIAL GIRL" - MADONNA

8 (Time) 8 (CH) 8 (CH) 8

The first staff of music for 'MATERIAL GIRL' consists of four 8-measure rests, each with a different marking: (V), (Time), (CH), and (CH).

(V) 8 (CH) 3 \wedge \wedge 3

The second staff of music for 'MATERIAL GIRL' begins with a 4-measure eighth-note pattern: G4, A4, B4, C5. It then has a 4-measure rest, followed by a 4-measure eighth-note pattern: G4, A4, B4, C5. This is followed by a 4-measure rest and a 4-measure eighth-note pattern: G4, A4, B4, C5. The dynamic marking *mf* is placed below the first measure.

3

The third staff of music for 'MATERIAL GIRL' begins with a 4-measure eighth-note pattern: G4, A4, B4, C5. It then has a 4-measure rest, followed by a 4-measure eighth-note pattern: G4, A4, B4, C5. This is followed by a 4-measure rest and a 4-measure eighth-note pattern: G4, A4, B4, C5. The dynamic marking *mf* is placed below the first measure.

TRUMPET IN B \flat

"GLORIA" - LAURA BRANIGAN

Musical staff for "GLORIA" - LAURA BRANIGAN. The staff contains a sequence of eighth and quarter notes in a 4/4 time signature. The key signature has one sharp (F#). The dynamic marking *mf* is placed below the first measure.

Musical staff for "GLORIA" - LAURA BRANIGAN. The staff contains a sequence of eighth and quarter notes. A first ending bracket is shown above the first two measures, with a repeat sign at the end. A second ending bracket is shown above the next two measures, with a repeat sign at the end. A *(V)* marking is placed above the first measure of the second ending.

Musical staff for "GLORIA" - LAURA BRANIGAN. The staff contains a sequence of eighth and quarter notes. A **4** marking is placed above the final measure, indicating a four-measure rest.

Musical staff for "GLORIA" - LAURA BRANIGAN. The staff contains a sequence of eighth and quarter notes. A *(CH)* marking is placed above the first measure, indicating a change.

Musical staff for "GLORIA" - LAURA BRANIGAN. The staff contains a sequence of eighth and quarter notes. A *mp* dynamic marking is placed below the final measure.

Musical staff for "GLORIA" - LAURA BRANIGAN. The staff contains a sequence of eighth and quarter notes. A *f* dynamic marking is placed below the final measure.

"YOU MAKE MY DREAMS COME TRUE" - HALL & OATS

Musical staff for "YOU MAKE MY DREAMS COME TRUE" - HALL & OATS. The staff contains four measures of whole notes. Above the first measure is a **4** marking. Above the second measure is a *(DRUMS)* marking. Above the third measure is a *(V)* marking. Above the fourth measure is an **8** marking.

Musical staff for "YOU MAKE MY DREAMS COME TRUE" - HALL & OATS. The staff contains a sequence of eighth and quarter notes. Above the first measure is a *(CH)* marking and a **16** marking. Above the second measure is a **2** marking. Below the staff are *V V* markings under the first two notes of each measure.

Musical staff for "YOU MAKE MY DREAMS COME TRUE" - HALL & OATS. The staff contains a sequence of eighth and quarter notes. Above the first measure is a **2** marking. Above the second measure are $\wedge \wedge$ markings. Above the third measure is a **6** marking. Above the fourth measure is a *(CH)* marking and an **8** marking. Below the staff are *V V* markings under the first two notes of the first measure.

TRUMPET IN B \flat

"WAKE ME UP BEFORE YOU GO-GO" - WHAM

(V)

8

(PC)

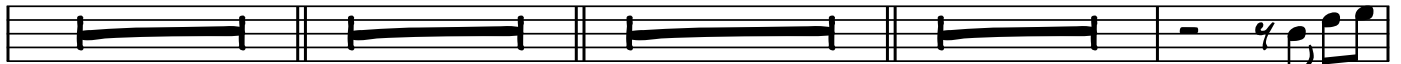
9

(CH)

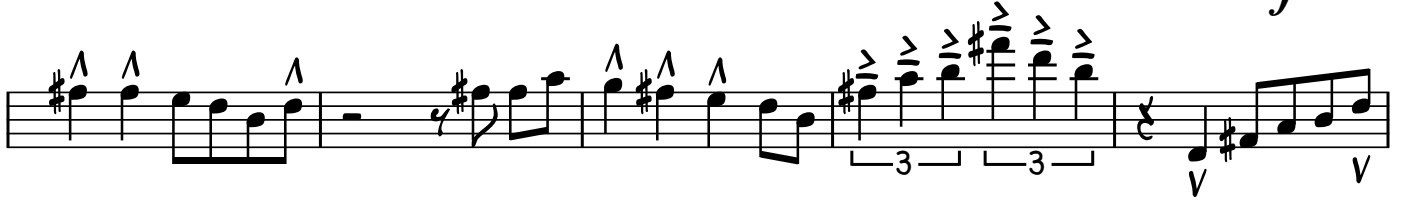
15

7

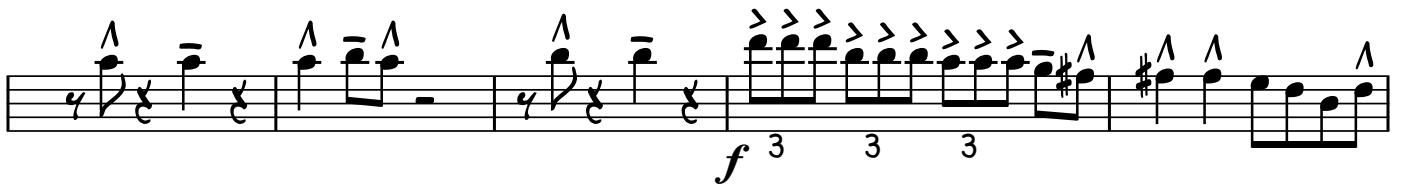
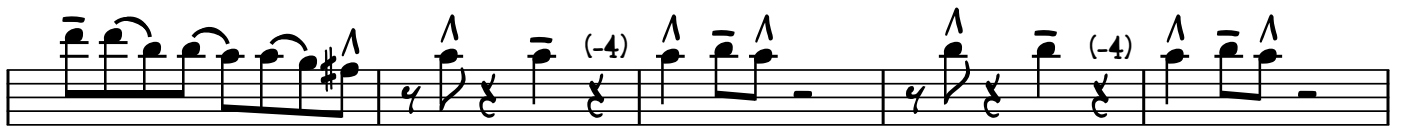
(HORN SOLI - SWUNG)



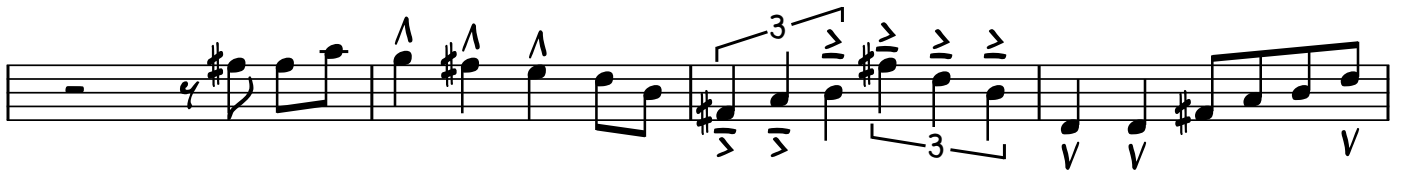
f



sfz <



f



"99 RED BALLOONS" - NENA



sfz

TRUMPET IN B \flat

7

mf

(CH) 16

f

8 7

ff

8 7

mf

16

f

1. 2.

"POUR SOME SUGAR ON ME"
DEF LEPPARD